

MHS HOSTS

PEQUAWKET HISTORICAL LEAGUE

The winter meeting of the Pequawket Historical League was held at the Red Schoolhouse with about 25 persons present from nearly a dozen historical societies. Guest speaker Carol Felice, an herbalist who gives summer demonstrations in 19th century living at the Colbath house on the Kancamagus highway, explained the use of medicinal herbs and the audience had a chance to sample several concoctions. Carol will present a program to MHS in August. Her enthusiasm and deep knowledge of home remedies, earth side cooking, laundering and other tasks carried out by hard working women of the 19th century was obvious. The League voted to make a financial gift in support of her work. The Colbath house is owned by the US Forest Service and is familiar not only to Mt. Washington Valley residents, but was visited last year by more than ten thousand travelers from all over the country and even from abroad.

CONWAY HISTORICAL SOCIETY MEMBERS listened to Snowvillage Sketches: "The Truant Officer" and "The Great Bridge Feud" March 11th. These radio programs, taped from original recordings, were heard in the 1930s over the Mutual Broadcasting Network. They were written by William Ford Manley, a Madison resident.

GRANVILLE BROTHERS PLAQUE

The Madison Historical Society is pleased to contribute toward a fund to erect a bronze plaque on Maple Grove Road near the Granville home honoring their contribution to American aviation. The long awaited honor has been achieved through the efforts of men and women dedicated to flying and determined to honor the memory of these outstanding innovators in a time when soaring into the skies held out promise as well as risk. Watch for complete information appearing this spring in the newspapers.

MADISON AUTHORS NIGHT

Over many years Madison writers, seasonal or resident, have produced an impressive body of work. Samplings will be read at the MHS evening program from a number of authors, past and present. Although e.e.cummings is probably Madison's most famous wordsmith, more than a dozen others - and this may include persons unknown to us - have achieved attention, sometimes via the internet, some through bound publication. William Ernest Hocking's books on philosophical subjects were known internationally a generation or so ago. In the 50s NBC television crews came to the big stone house that Dr. and Mrs. Hocking built. the timing - a winter storm - complicated the visit, if hearsay has it right, but the show did go on screen.

In more recent years the Madison Library has shelved books of Madison based authorship such as Dieter Brill (in physics); Al Watson (poetry); Mary Lucy (Madison cemeteries); Mike Hathaway has gone into print, as has Penny Hathaway. Jim Dumke has just finished a book. Back in the 1970s Helen Prince wrote a book "Old Houses of Eaton and Madison." And back when Madison High School was in existence "The Madisonian" yearbook included writing by students, some of whom still live in town. We hope to be hearing from one or two of them! We will include as much as time permits, and perhaps continue the presentation in the future. How about a gathering of Madison authorship in a single publication?

We hope you will attend this program.

THE MYSTERIOUS "C.M." ARTIST?

In the winter issue of this newsletter we printed a review by Sam Robbins, an art critic, of two e. e. cummings paintings owned by MHS. He also saw a painting signed "C. M. for Edward Cummings, Chocorua, 1902." The work was obviously that of a professional artist, and Mr. Robbins undertook the task of identification. Here are excerpts from a letter to Ray Stineford about the results of his research.

See page 2 for excerpts.

over eight.

But what about our old schoolhouse? The bank of four windows on the east wall appears to have the six light over six shape, but until we carefully measure the frames we can't be sure. In any case, it is highly unlikely that more than two windows were in the wall.

Another point: in two and a half story houses the upper story over the front entrance might have either nine panes over six panes, matching the first floor; or, perhaps more common, six over six. You can see this as you drive past old houses - and notice where the eavesline comes in relation to the top of the five windows.

We will replace the schoolhouse windows with small panes. The present two over two came probably around 1900.

GIFT OF PERIODICALS

Father Louis Souci of Conway has given MHS some 19th and early 20th century copies of The Granite monthly, The Young Idea, and The Youth's Companion. He found them in an old table he bought. We appreciate his thinking of us. We have copied the back cover of The Young Idea for April 1889.

(See page 4)

QUIZ QUESTION

Who were the two US Presidents who died on the same date? What was that date? One said of the other "-----still lives." He was wrong. He had died a few hours earlier.

HAVE YOU PAID YOUR DUES?

Our membership is gradually increasing, and we welcome everyone to MHS. We know you intend to keep paid up to date, but if you are in arrears, or are not sure if you are, please write to the Treasurer. Box 505, 0849.

SUMMER SCHEDULE

The Museum opens the last weekend in May and will be open ~~Tuesdays~~ 2--4 PM and weekends when docents are available.

Call Ray Stineford 367-4687 or Mary Lucy 367-4535 for appointment.

DOCENTS!! Needed now.

Learn about Madison History and share your knowledge with visitors.

Cemeteries and Graveyards of

Madison, New Hampshire

Compiled by

Mary K. W. Lucy

For

The Madison Historical Society

2002

This is a hard cover book with 280 pages including map, photos, headstone information, some genealogy information, and indexes. Price: \$25.00 and \$5.00 shipping and handling.

Also now available! Madison Historical Society Note Cards-set of 8 - 2 each of 4 drawings of: the Madison Historical Society Museum, town Hall, Madison Corner School, and Madison R.R. Station. Price \$8.00 and \$1.25 shipping and handling.

Send requests to Mary Lucy, PO Box 6, Silver Lake, NH 03875.

ROBBINS' EXCERPTS

"We have some clues to guide us. The painting was dated 1902 on the back of the canvas, 3 years after Edward Cummings bought Joy Farm. the painting looked like the hand of a mature and seasoned painter."

"In overall style, it was conservative enough to represent the 19th century. yet having been done in 1902, was progressive or 'modern' enough to suggest that the artist was in touch with the latest developments in landscape painting. The rosebushes in the foreground were probably planted by e.e.cummings' mother, Edward's wife Rebecca. She was a member in good standing of her local garden club back in Cambridge, Mass. and might have wanted to embellish the Joy Farm "front yard" that looked out on Mount Chocorua."

"Edward was 41. By then he was a well-known divinity professor and minister at Harvard. It would not have been too difficult to let the word out to find a good landscape painter. By the same token, he was thrifty, so he was unlikely to want a well-known expensive 'old master.' After all, the subject matter was not that 'important in the history of art' as they say. So he had to look for a painter who was not yet well known and would thus be reasonably priced. Women artists had a hard time getting recognized in the 19th century and the first part of the 20th century.

Furthermore, a woman who

was 'out running around making paintings' was considered one of questionable character to be avoided at all costs by art lovers and buyers and certainly by polite company and proper Bostonians. Thus painters usually signed their paintings with their initials, so as not to bring automatic shame on themselves and automatic rejection of their painting.

Thus it seemed that our search for 'CM' narrowed down to a skilled professional woman artist, probably a Boston artist, who would be willing to paint a landscape in the White mountains. Since the painting is on canvas it seems at first glance to be an oil painting. Yet seen under glass it looks like a superbly painted gouache, a thick form of watercolor painting. So the painter was probably a recognized watercolor painter, perhaps a member of the American Watercolor Society. Painters don't usually hit their full stride until age 40, so we are looking for a competent, female, professional who painted in both oils and watercolors, exhibited in Boston, probably born about 1860, so as to have the same implicit aesthetic taste as Edward Cummings, who was born in 1861.

With these guidelines in mind, I trudged through the M's in Who was Who in American art. After a few false starts, I finally got to about the 200th entry. There staring me in the face was 'Clara T. McChesney.' Born in California. I quickly rejected a western painter, but having

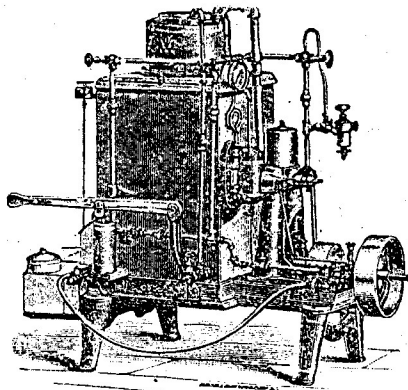
an open mind read on anyways. Lo and behold she evidently spent her career in New York and Boston, exhibited continuously at the Boston Art club from 1889-1906, was a member of the American watercolor Society, and 'painted landscapes in the White Mountains.' We could not find any other entry to fit these requirements.

Thus it seems that your painting of Mount Chocorua, dedicated to Edward Cummings in 1902, signed by 'CM', was probably done by Clara McChesney, who was born in 1860 in California, spent her adult career in New York and Boston, and died in 1928."

THROUGH A GLASS-BRIGHTLY

With the first phase about to start in returning the old Madison schoolhouse to its original window appearance, this seems a good time to discuss window panes in old buildings. By the middle third of the 19th century, the period in which the school was built, houses were getting a new look in northern new England towns. the nine pane sash above a six pane sash was giving way to six panes (or lights) over six. Now, with only twelve panes in a window, each pane was eight inches tall, six inches wide. The earlier window panes each measured nine inches high by seven wide.

An exception to the above descriptions was the far less common twelve pane over eight pane sash, or even eight



THE SHIPMAN Automatic Steam Power. (Fuel, Kerosene Oil.)

The cleanest, safest, most economical and desirable power in the world for Printers, Machinists, Jewelers, Farmers, Electric Lighting, Grain Elevators, etc. No dust, dirt or ashes. Requires little attention and no engineer. For catalogue and further particulars, address,

POPE MFG. CO.,
291 Wabash Ave., Chicago.

LEVTYPE CO.
PHOTO ENGRAVERS
(DESIGNERS AND)
ZINC CUTTERS
170 Madison St. CHICAGO, ILL.
Illustrations for Books, News Papers, Catalogues etc.

New Striped Rose. The Greatest Novelty IN HARDY ROSES EVER OFFERED.
It originated with us in 1884. It is entirely new, having secured the title of our northern writers without precedent. With us **THIS ROSE FREE**. Flowers large and fragrant, pink, double, and each with white and red coloring. Free bloomers and an old flower in a new name, but a genuine novelty. Price 10 cents, and each purchaser can have a copy of **VICK'S FLORAL GUIDE** for 1885, the latest edition of America, now 100 pages and 100 colored plates. Contains an illustration and description of every new plant, flower and vegetable, and prices of same. No bonus offered. We do not advertise "two dollars' worth for 50 cents," but we do give money's worth, both in quality and quantity. See our Novelties in Flowers and Vegetables. Price of **GHODE**, 15 cents, each copy contains a certificate good for that amount in seeds, so that the book is practically free.
JAS. VICK SEEDSMAN, Rochester, N.Y.

20 CENTS
Pays for Your Name & Address on this Pen and Pencil Stamp. Address **LOUIS RICH & CO.,** Richmond, Va.

CARDS. 20 Hidden Name, 10 c., 25 Look Through, 10 c., 50 Chronos, 10 c., 12 hidden Pictures and 100 Scrap Pictures, 10 c. **ALBERT LEONARD,** Carlisle, Pa.

\$400 For A Fish In those willing where in mentioned, before July 12, 1884. First correct answer of \$50; second \$25; next ten each \$10; next 75 each \$1.00. Each Competitor must send 25 cents with answer, for 50 handsome imported Visiting Cards. Mention this paper, and secure a valuable present free. Address, **BANNER PUBLISHING CO.,** Toronto, Ont.

HAVE YOU SEEN THEM?

The newest, neatest, prettiest imported Chrono cards, 50, your name on, ten cents. Agents wanted. Samples two cents. Address, **G. H. HAKES,** Belvidere, Ill.

THE TEACHER'S OUTLOOK.

Published by The Teacher's Publishing Company, Des Moines, Iowa. A monthly magazine devoted to the interests of teachers and advanced pupils and intended to supplement the good work done by other school journals rather than to occupy the same field. Instead of filling its columns with school methods, school aids and the details of school work, it will aim to interest the teachers in matters outside of the atmosphere of the school-room, and its columns will furnish an OUTLOOK upon affairs of life, facts in science and nature which thus rate and test the theories of the schools. In this work it will hope to furnish the teacher with a natural source of inspiration and mental energy, quicken thought and make the school-room a place joyous with buoyant spirits that offer a responsive greeting to the inquiring minds of youth, rather than heavy with that gloom and dullness which often surrounds the daily toil.

A leading feature of the magazine will be a monthly review of current events, civil and industrial problems, scientific inventions, discoveries, etc.

Another feature will be a very complete Review of current Literature, especially of all books and magazines coming within the sphere of its labor. We have entered into arrangements with all the leading publishers to keep us informed of all their new and prospective publications, and the Reviews will be made by competent critics.

Still another feature, and a very important one as giving a practical value to the OUTLOOK offered, will be the formation of a circle of writers out of its subscribers, from which it hopes to draw its corps of contributors. This plan is original as applied to a magazine, and is based on the idea of co-operation, or mutual helpfulness. If met with that appreciation necessary to its full execution it will be the means of introducing many new writers to the public, and of aiding many who now lack the training in the expression of thought necessary to a kindly reception in the field of literature into which their tastes would lead them. For further particulars send four cents for Prospectus, or fifty cents for magazine eight months.

Every Collector

ought to know about the stamps offered for sale in E. T. Parker's MONTHLY PRICED-LIST OF POSTAGE STAMPS. Write for one. It will be mailed FREE.

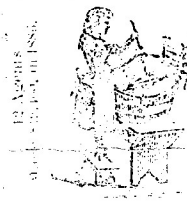
E. T. PARKER,
Bethlehem, Pa. U. S. A.

MAGIC JOKECARD!

and our catalogue of over 100 illustrations and Song Book for only 5 cts. Address, **THE IMPERIAL NOVELTY CO.,** Smyrna, New York.

SAMPLE FREE!

Send your address on a postal card for free sample copy of the handsome little magazine, the Patriotic Tribune and Advertiser, of Smyrna, New York.



Agents Wanted.

Send the Frederica Washers, salary or Commission. Exclusive territory. Washes more with time and labor spent than any other washer, or money to fund. Lasts a life time. No year on clothes. Price \$5; want for agent & Agent's terms.

FREDERICA WASHING CO., Hillsdale, Mich.

FINEST SAMPLE BOOK of Hidden name Gold, Rev. ed. edge and imported visiting cards, 10 c. each. With 25 cents sent, etc. for C. O. and C. O. Cadiz, Ohio.

\$25 Sewing-Machine FREE
to at once establish trade in all parts, by placing our machines in the hands of the people, and then, we will send free to one person in each locality, the very best sewing-machine made in the world, with all the attachments. We will also send free a complete line of our costly and valuable art samples. In return we ask that you show what we send, to those who may call at your home, and after 22 months all shall become your own property. This grand machine is made after the Singer patents, which have run out; before patents run out it sold for \$20, with the attachments, and now sells for \$50. Best, strongest, most useful machine in the world. All is free. No capital required. Plain, brief instructions given. Those who write to us at once can secure free the best sewing-machine in the world, and the finest set of works of high art ever shown together in America. **TRUE & CO.,** Box 740, Augusta, Maine.